

# magnolia





## BUILDING TYPE 1 (MODELED)

Includes Plans 2, 4, 6, 7



FRONT



BACK

## BUILDING TYPE 5 (NOT MODELED)

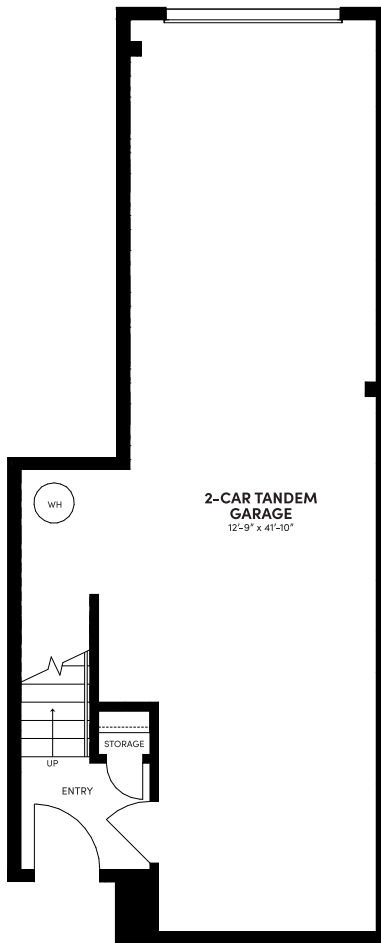
Includes Plans 1, 3, 5



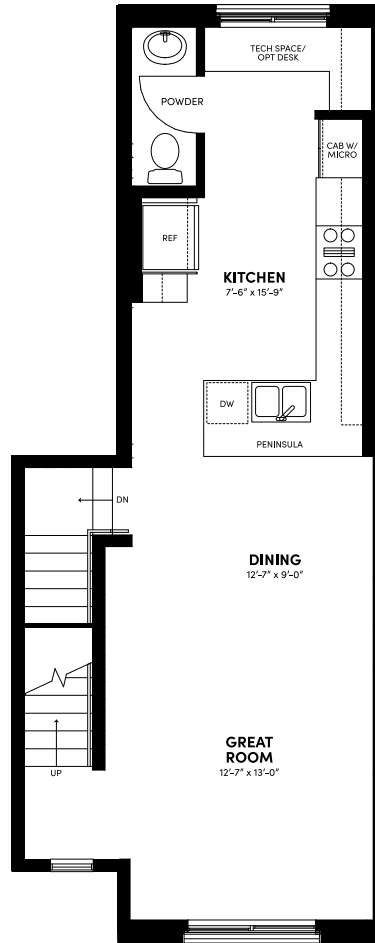
FRONT



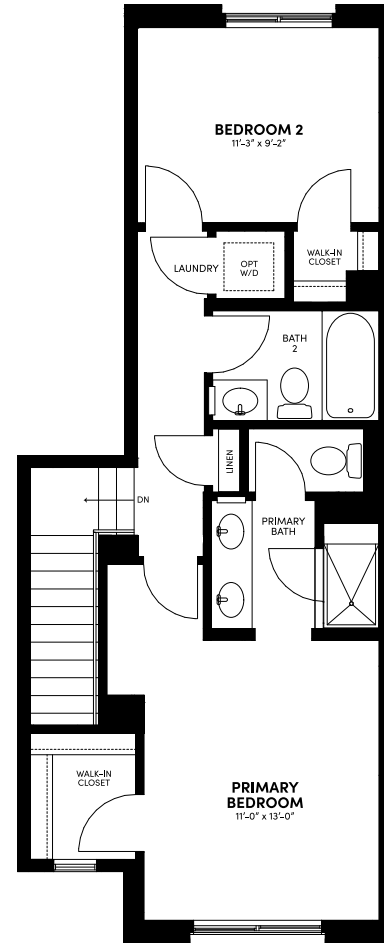
BACK



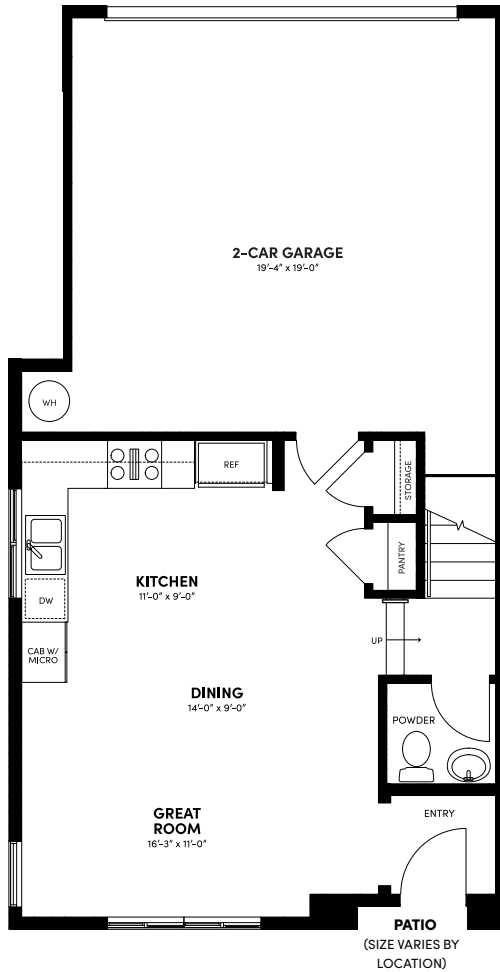
FIRST FLOOR



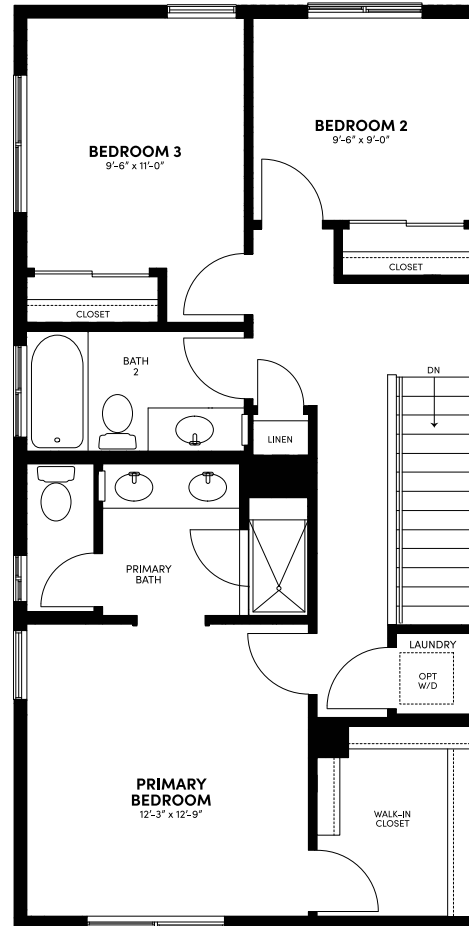
SECOND FLOOR



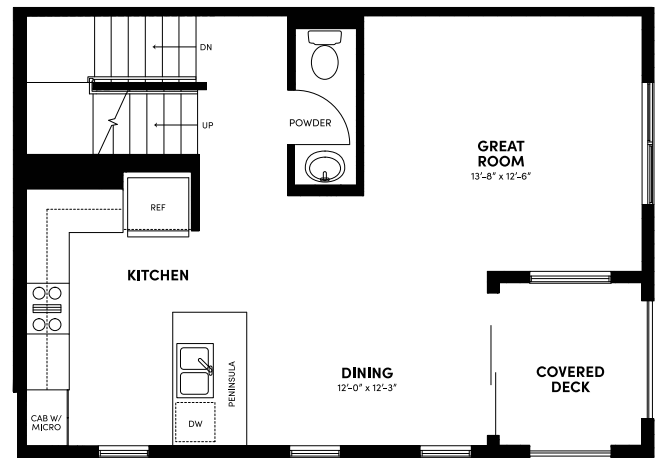
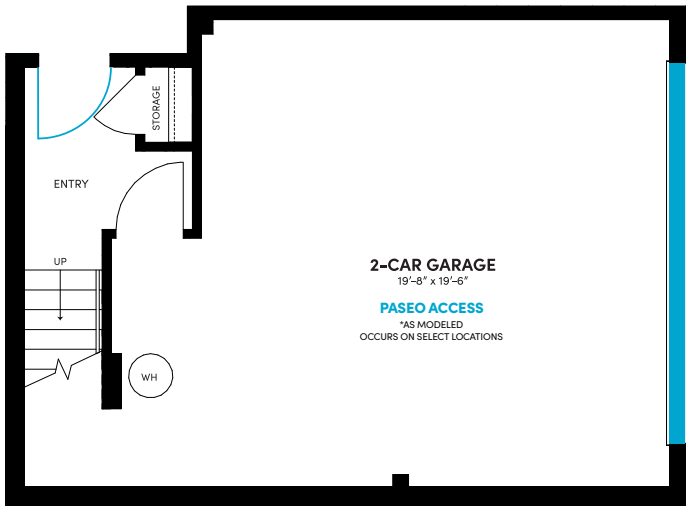
THIRD FLOOR



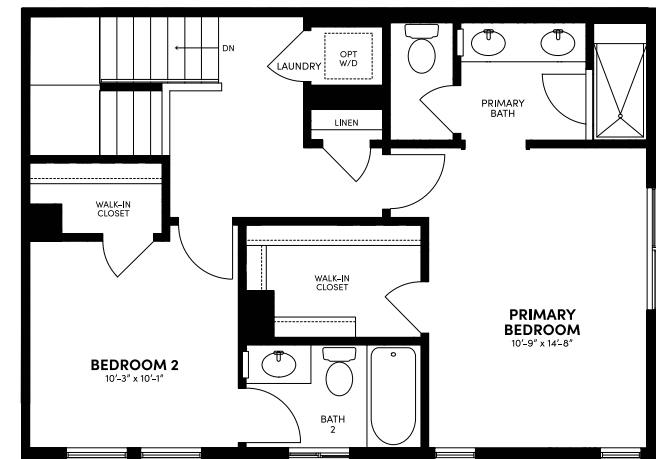
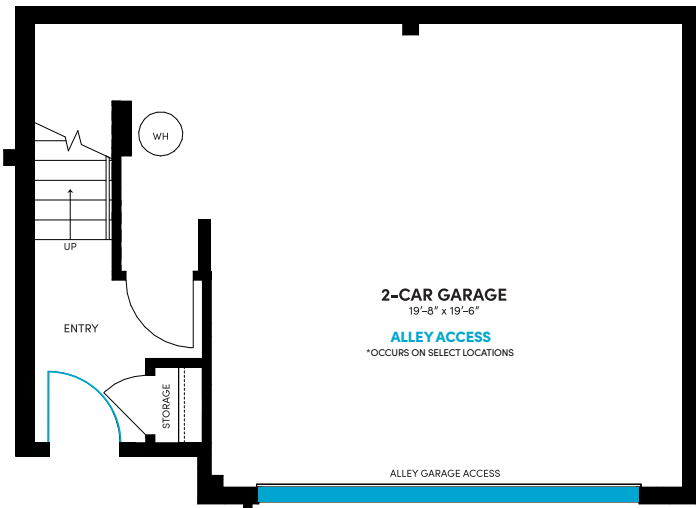
FIRST FLOOR



SECOND FLOOR

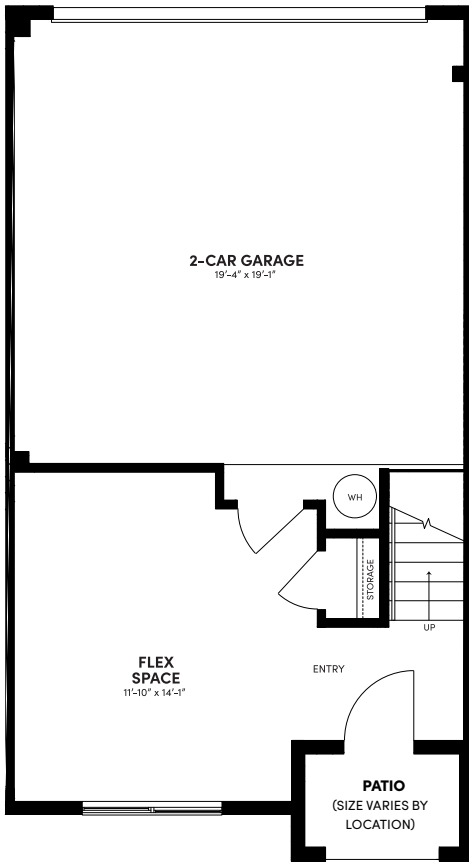


**SECOND FLOOR**

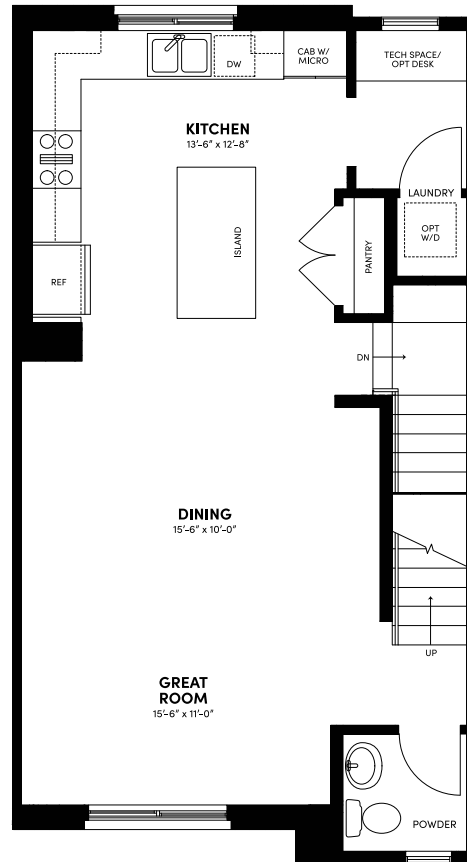


**THIRD FLOOR**

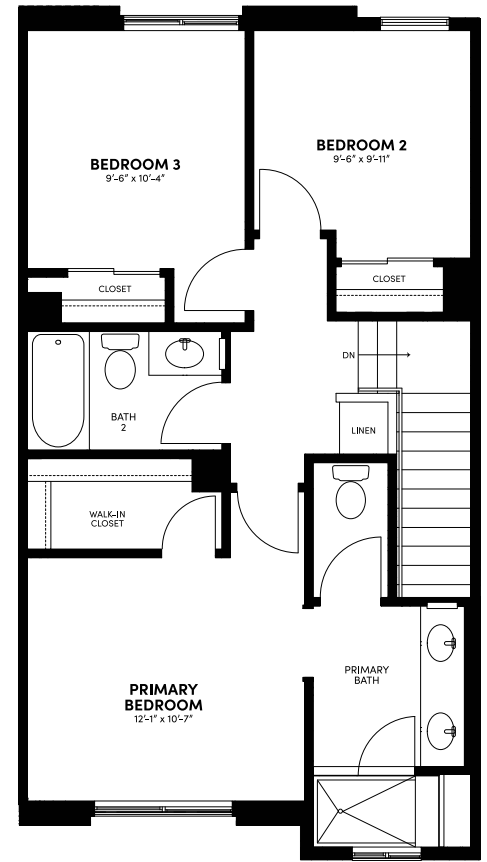
**FIRST FLOOR**



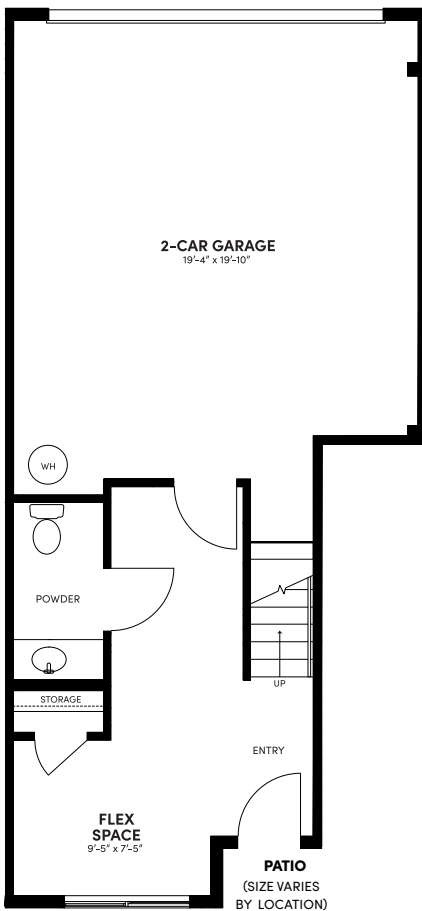
FIRST FLOOR



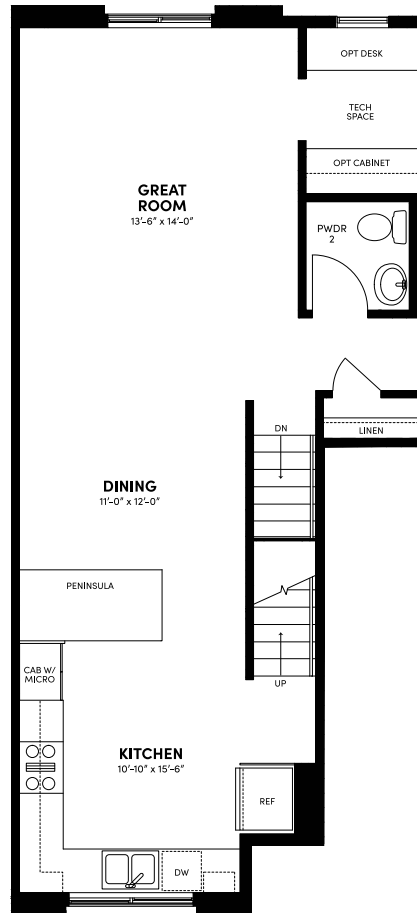
SECOND FLOOR



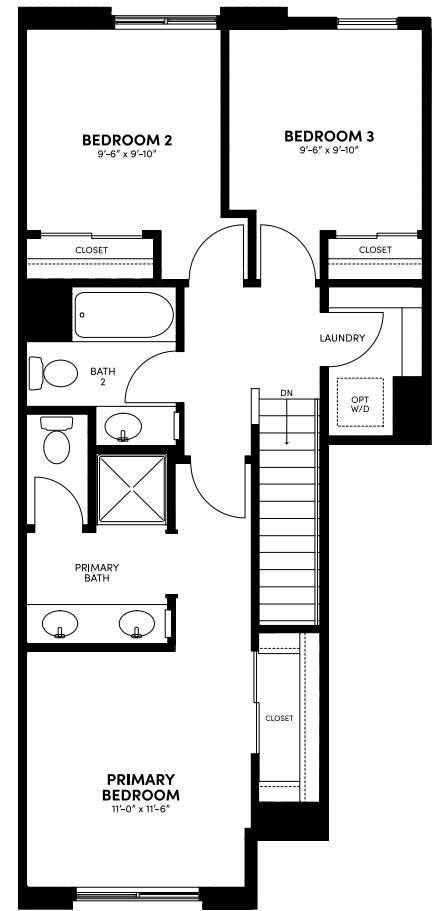
THIRD FLOOR



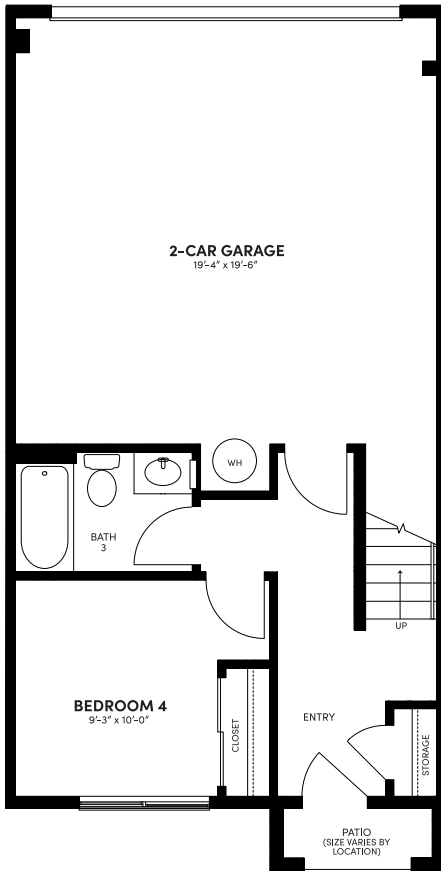
FIRST FLOOR



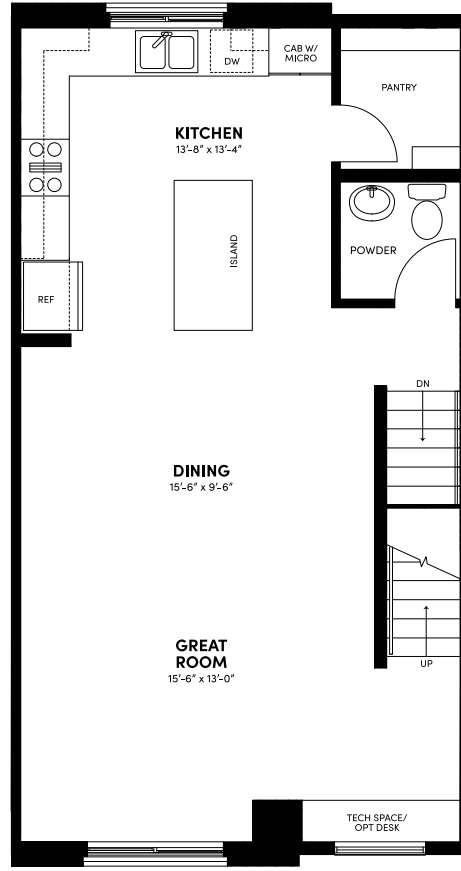
SECOND FLOOR



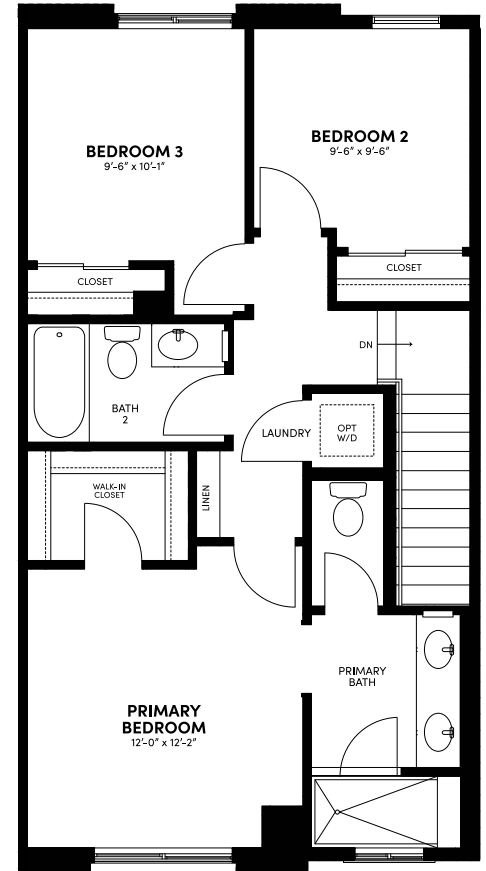
THIRD FLOOR



FIRST FLOOR

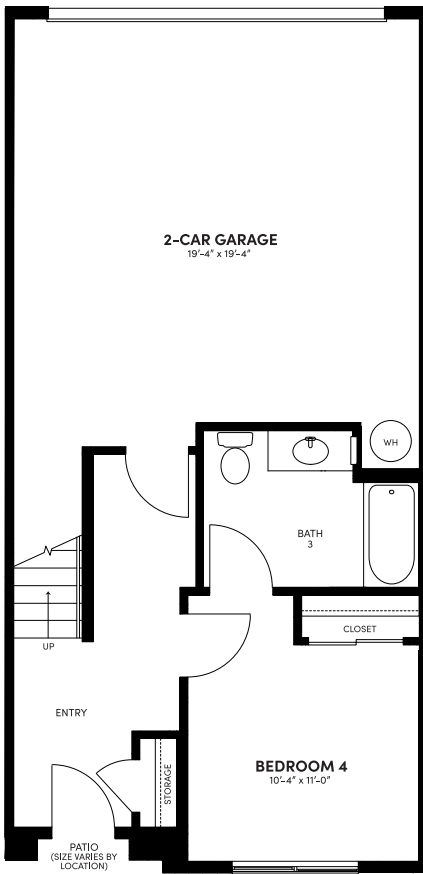


SECOND FLOOR

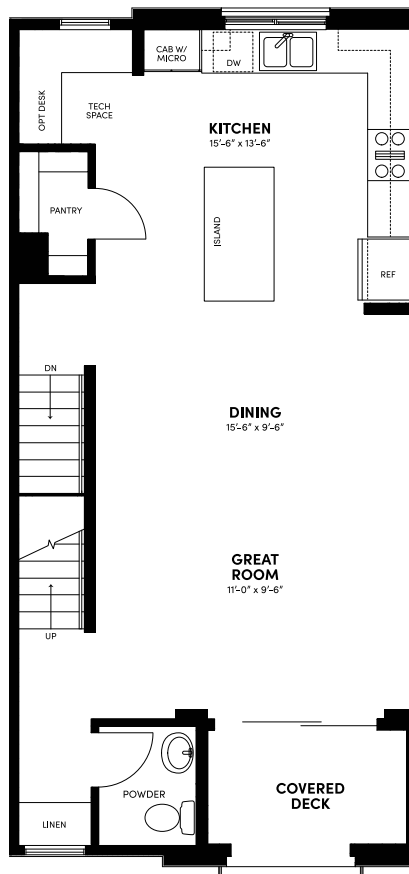


THIRD FLOOR

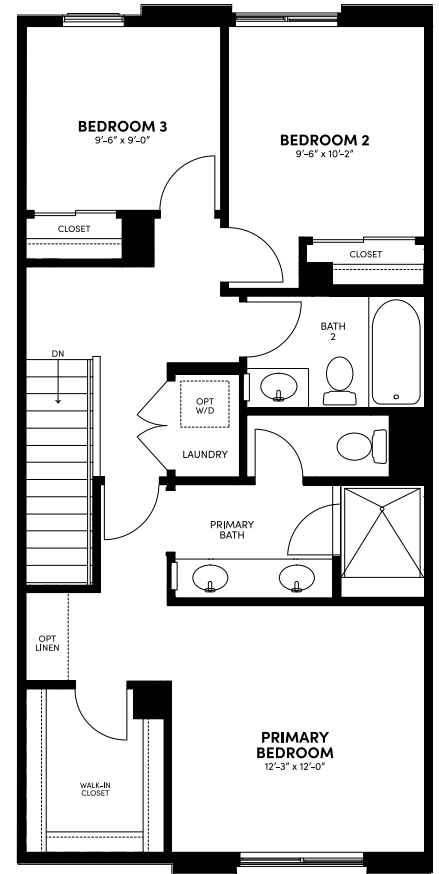




**FIRST FLOOR**



**SECOND FLOOR**



**THIRD FLOOR**



### EXCEPTIONAL EXTERIORS

- A welcoming street scene comprised of detailed exteriors in a contemporary Spanish architectural style
- Decorative building exterior light fixtures (vary by elevation) and address signs (per building and home)
- Inviting low-maintenance 7' entry doors in painted finish with matte black Schlage(R) front door hardware
- Convenient direct-access garages with contemporary sectional roll-up garage door to match color schemes plus two three-button transmitters

### STYLISH LIVING SPACES

- 8' ceilings on first floor, with 9' ceilings on second and third floors
- Clean-lined square wall corners
- Decorative door casings and 4-1/2" baseboards
- Two-panel interior doors with lever door hardware in matte black
- Stylish tile flooring in entry, kitchen, all baths and laundry with carpet in balance of home
- Laundry space with gas dryer hook-up

### POWDER BATHS

- Elegant pedestal sink with Delta® single-handle faucet in chrome (base cabinet in lieu of pedestal sink at Plan 5 only)

### PRIMARY BATHS

- Quartz countertops with 6" backsplash and square sinks with Delta® single-handle faucets in chrome
- Shower with straight stacked ceramic tile surround and recessed niche
- Convenient medicine cabinet for extra storage

### SECONDARY BATHS

- Quartz countertops with 6" backsplash and rectangular sink with Delta® single-handle faucet in chrome
- Tub/shower combo with simulated subway tile surrounds
- Convenient medicine cabinet for extra storage

### MODERN KITCHENS

- Stainless steel KitchenAid® appliance package includes:
  - 30" gas range with four burners
  - 30" hood over range
  - 24" microwave
  - Multi-cycle dishwasher
- European-style white frameless thermofoil cabinetry with satin nickel pencil pull hardware with soft-close doors and drawers

- Stylish square-edge quartz countertops with 6" backsplash and full-height backsplash behind cooktop/range available in three included colors: Simply Gray, Simply White and Simply Beige
- Sonetto undermount stainless steel single-basin kitchen sink with Delta® Essa® single-handle pullout faucet in chrome finish
- Convenient rollout trash and recycling cabinet with two bins

### TECHNOLOGY & ENERGY EFFICIENCY

- Energy-efficient LED disk lighting throughout home, including great room and all bedrooms
- Technology pre-wiring with multiple enhanced CAT 6e data wire to allow for phone lines and high-speed data connection in primary bedroom, secondary bedrooms, great room, kitchen (telephone only) and offices/tech spaces
- USB outlets at primary bedroom bed wall and kitchen offer a convenient way to charge your devices
- Flat-screen TV prep at great room
- Included J-box with dimmers in primary and secondary bedrooms for future pendant light/fan
- Low-E dual-glazed vinyl windows with white frame color, providing solar control and visible light transmittance, resulting in utility cost savings with increased efficiency
- Central air conditioning and heating with programmable Honeywell® Lyric™ T6 smart thermostat, compatible with Apple(R) HomeKit(R), creates more balance and energy-conscious consumption
- High-performance Delta® faucets and low-flow elongated toilets and showerheads conserve water
- Energy-efficient electric tank water heaters
- Pre-plumbed with conduit for electric vehicle charging station in garage (homeowner's electrician needed to install desired EV charging equipment, associated circuit breaker in the sub-panel)
- Full pest control service at move-in covers the interior and exterior of the home
- Included Solar Panel System (must select lease payments or purchase)